

New York State Electric & Gas Corporation

Jennison Transmission Solution Project

Exhibit 4

Environmental Impacts

Part 3 of 9

New York State Electric & Gas Corporation

Jennison Transmission Solution Project

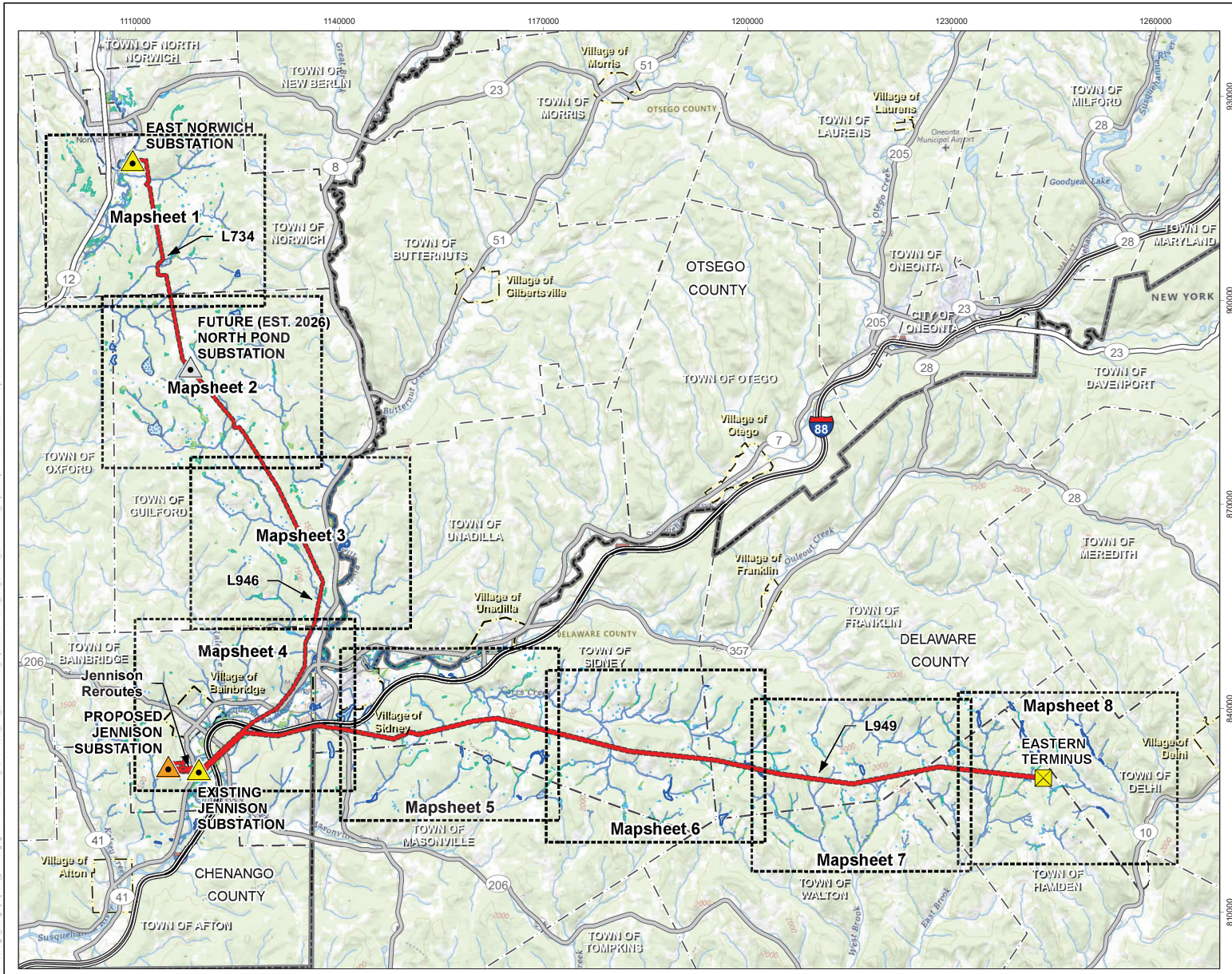
Exhibit 4

Environmental Impacts

Figure 4-5

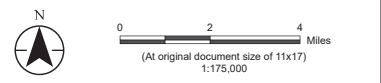
USFWS NWI and NYSDEC Mapped Wetlands

This page intentionally left blank.

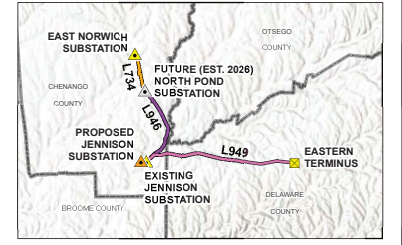


- Jennison Transmission Solution Project**
- ☒ Eastern Terminus
 - ☒ Substation, Existing
 - ☐ Substation, Future
 - ☒ Substation, Proposed
 - ☒ Proposed Right-of-Way
- NYS Department of Environmental Conservation***
- ☒ Freshwater Wetland
 - ☒ National Wetlands Inventory*
 - ☒ Freshwater Emergent Wetland
 - ☒ Freshwater Forested/Shrub Wetland
 - ☒ Freshwater Pond
 - ☒ Lake
 - ☒ Riverine
- Road or Highway**
- ☒ Interstate
 - ☒ U.S. or State Highway
 - ☒ Secondary State or County Highway
 - ☒ City or Town Boundary
 - ☒ County Boundary
 - ☒ Village Boundary
- ☒ Mapsheet Extent, 1:32,000 Scale

*Hydrologic features shown within a 2-mile buffer of project ROW only



- Notes**
1. Coordinate System: NAD 1983 StatePlane New York Central FIPS 3102 Feet
 2. Data Sources: NYSEG Data, 2024; NYSDC State-Regulated Freshwater Wetlands, 2022; USFWS National Wetlands Inventory, v2, 2000; Esri North American Detailed Streets, 2012; NYS GIS Program Office Civil Boundaries, 2018
 3. Background: USGS Topo (The National Map), <https://basemap.nationalmap.gov/req/trest/services/USGS/Topo/MapServer>

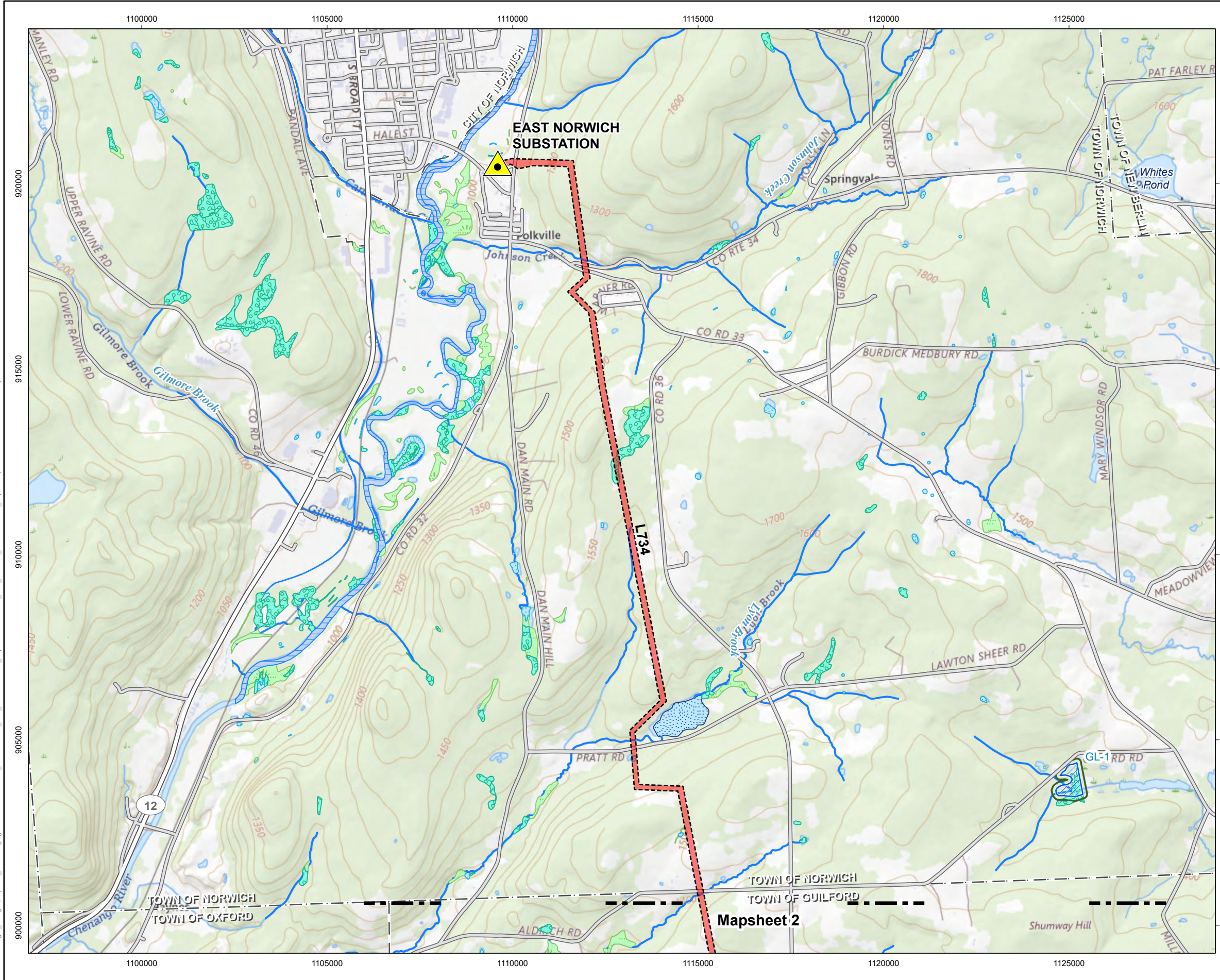


Project Location: Chenango, Delaware, & Otsego Counties, NY
 Prepared by AB on 2024-08-21
 TR by DG on 2024-07-30
 IR by BS on 2024-10-18

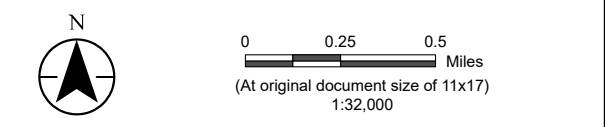
Client/Project: Jennison Transmission Solution Project
 NYSEG CLCPA Program

Figure No. **4-5**
 Title: **USFWS NWI & NYSDEC Mapped Wetlands Mapsheet Index**

Disclaimer: This document has been prepared based on information provided by others as cited in the Notes section. Stantec has not verified the accuracy and/or completeness of this information and shall not be responsible for any errors or omissions which may be incorporated herein as a result. Stantec assumes no responsibility for data supplied in electronic format, and the recipient accepts full responsibility for verifying the accuracy and completeness of the data.



- Jennison Transmission Solution Project**
- Substation, Existing
 - Proposed Right-of-Way
- NYS Department of Environmental Conservation**
- Freshwater Wetland
 - 100-ft Adjacent Area
- National Wetlands Inventory**
- Freshwater Emergent Wetland
 - Freshwater Forested/Shrub Wetland
 - Freshwater Pond
 - Lake
 - Riverine
- Mapsheet Match Line
 - City or Town Boundary
- Road or Highway**
- U.S. or State Highway
 - Secondary State or County Highway
 - Local, Neighborhood, Rural or City Street



Notes
 1. Data Sources: see Figure 4-5 Mapsheet Index notes

Project Location
 Chenango, Delaware, & Otsego Counties, NY

Client/Project
 Jennison Transmission Solution Project
 NYSEG CLCPA Program

Prepared by
 AB on 2024-06-21
 TR by DG on 2024-07-30
 IR by BS on 2024-10-18

213415070 REVA

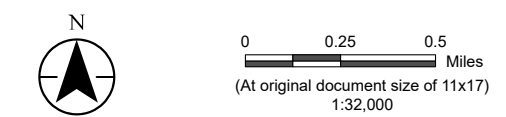
Figure No.
4-5

Title
USFWS NWI & NYSDEC Mapped Wetlands
Mapsheet 1 of 8

U:\213415070\gis_cad\gis\project1\permitting\figure\Antiole VIII\Exhibit_4\213415070_JTS_Exhibit_Environmental_Impacts.aprx Revised: 2024-11-11 By: abhattaral

Jennison Transmission Solution Project

-  Substation, Future
-  Proposed Right-of-Way
- NYS Department of Environmental Conservation**
-  Freshwater Wetland
-  100-ft Adjacent Area
- National Wetlands Inventory**
-  Freshwater Emergent Wetland
-  Freshwater Forested/Shrub Wetland
-  Freshwater Pond
-  Lake
-  Riverine
-  Mapsheet Match Line
-  City or Town Boundary
- Road or Highway**
-  Local, Neighborhood, Rural or City Street



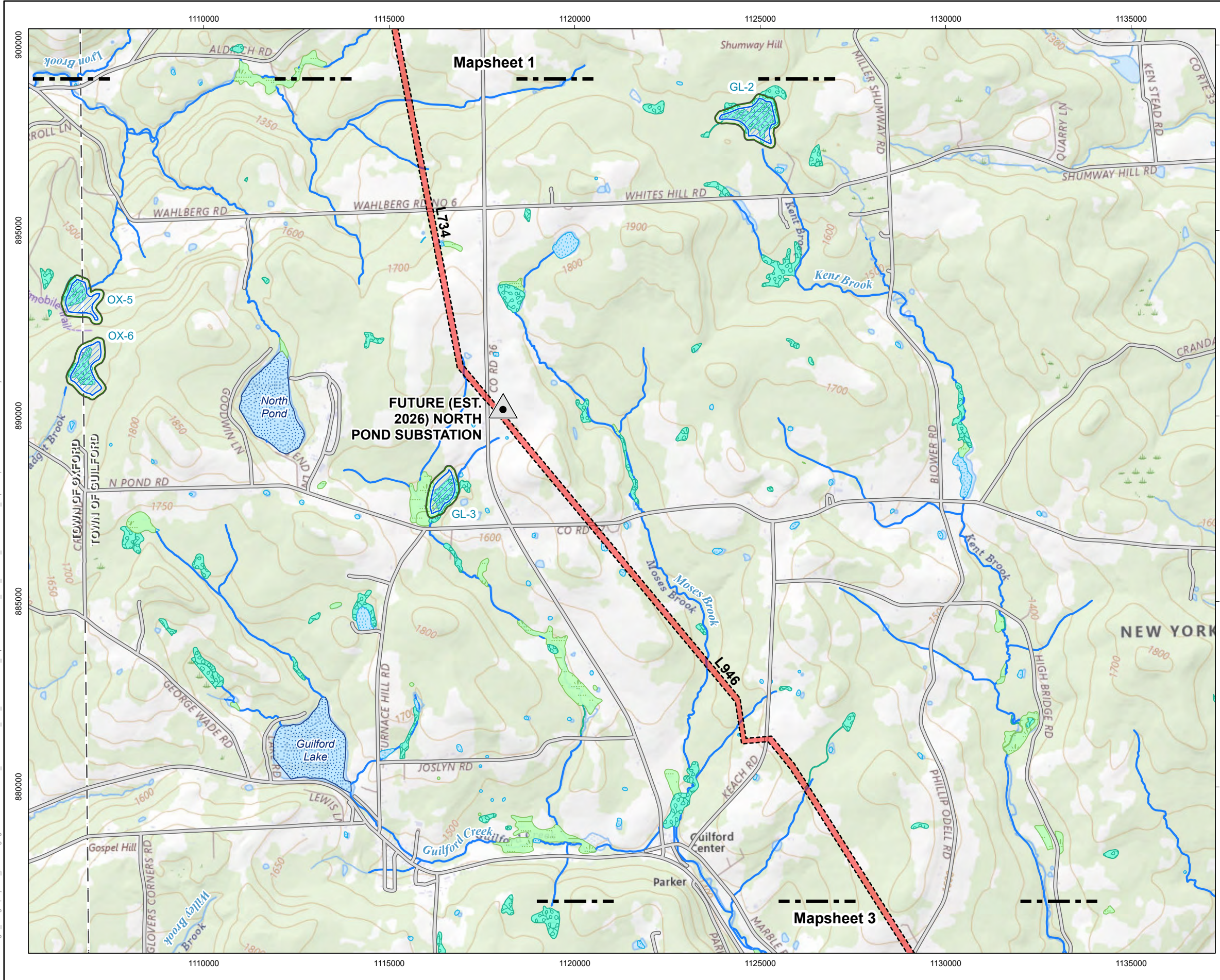
Notes
1. Data Sources: see Figure 4-5 Mapsheet Index notes

Project Location
Chenango, Delaware, & Otsego Counties, NY

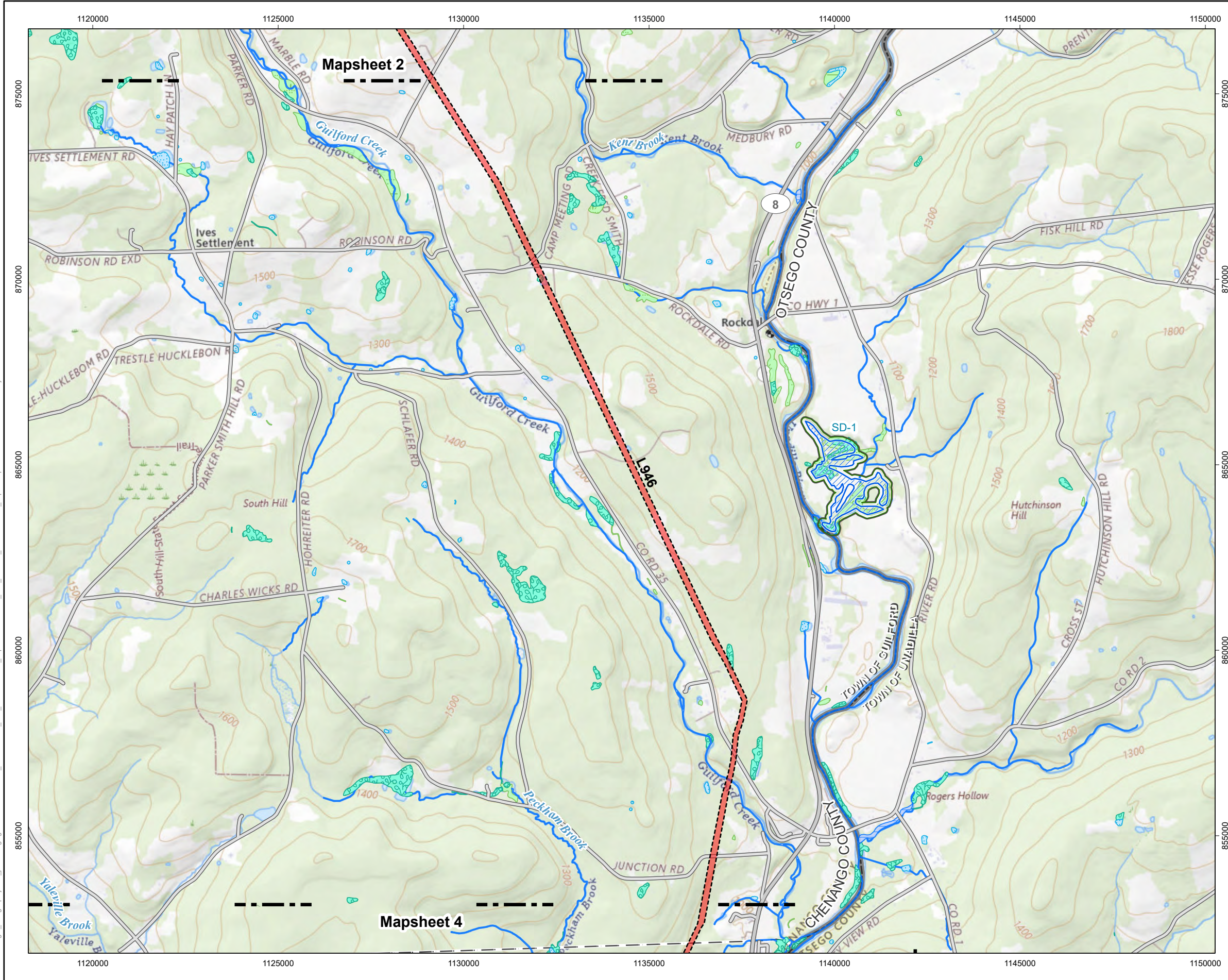
Client/Project
Jennison Transmission Solution Project
NYSEG CLCPA Program

Figure No.
4-5

Title
**USFWS NWI & NYSDEC Mapped Wetlands
Mapsheet 2 of 8**

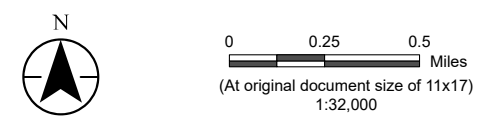


U:\213415070\gis_cad\gis\project1\permitting\figure\Antioe\VIII\Exhibit_4\213415070_JTS_Environmental_Impacts.aprx Revised: 2024-11-11 By: abhatharal



Jennison Transmission Solution Project

- Proposed Right-of-Way
- NYS Department of Environmental Conservation**
- Freshwater Wetland
- 100-ft Adjacent Area
- National Wetlands Inventory**
- Freshwater Emergent Wetland
- Freshwater Forested/Shrub Wetland
- Freshwater Pond
- Riverine
- Mapsheet Match Line
- City or Town Boundary
- County Boundary
- Road or Highway**
- Secondary State or County Highway
- Local, Neighborhood, Rural or City Street



Notes
 1. Data Sources: see Figure 4-5 Mapsheet Index notes

Project Location
 Chenango, Delaware, & Otsego Counties, NY

Client/Project
 Jennison Transmission Solution Project
 NYSEG CLCPA Program

Figure No.
4-5

Title
**USFWS NWI & NYSDEC Mapped Wetlands
 Mapsheet 3 of 8**

U:\213415070\gis_cad\gis\project1\permitting\figure\Antiole VIII\Exhibit_4\213415070_JTS_Environmental_Impacts.aprx Revised: 2024-11-11 By: abhatlari